



21 Crowhurst Crescent

Storrington | West Sussex | RH20 4QU

A second floor purpose built one bedroom flat conveniently located within 1/4 mile of the village centre. Internally, the property is well presented with accommodation comprising: sitting room, kitchen, superb sized bedroom and bathroom. Outside, there is allocated parking and visitor parking and communal garden.

Communal Entrance Hall Stairs to:

Second Floor Landing Own private front door to:

Entrance Hall Radiator, access to large loft space, shelved linen cupboard housing water tank.

Open Plan Sitting Room 13' 6 to bay" x 11' 8" (4.11m x 3.56m) Radiator, recessed uPVC double glazed window bay, archway through to:

Kitchen 11' 8" x 6' 2" (3.56m x 1.88m) Range of wall and base units, roll top working surfaces, one and a half bowl single drainer sink unit, range of eye-level cupboards, plumbing for washing machine, fan assisted electric hob and separate grill, four ring gas hob with extractor over, Velux double glazed windows, part tiled walls, integrated fridge and freezer.

Bedroom 30' 2" x 10' 10 to bay" (9.19m x 3.3m) Spacious suite with Velux double glazed windows, large eaves storage cupboard, double glazed windows, built-in double wardrobe cupboards, radiator.

Bathroom Panelled bath, pedestal wash hand basin, low level flush w.c., radiator, eaves storage cupboard.

Outside

Parking Allocated parking space with visitor parking.

Outside The garden is communal for all four flats.

Maintenance - The maintenance charges are £1,875 and an annual ground rent of £1.

Lease Length - The lease commenced on 1st January 2002 and lasts 125 years.

EPC Rating: Band C.

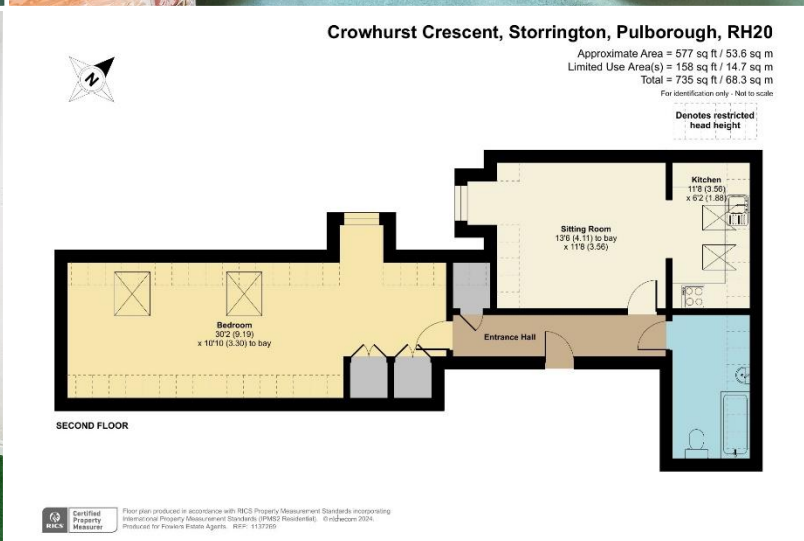


Fowlers Greenfield House, The Square, Storrington, West Sussex, RH20 4DJ

www.fowleronline.co.uk

storrington@fowleronline.co.uk

01903 745844



Important Notice

1. Fowlers wish to inform all prospective purchasers that these sales particulars do not form part of any contract and have been prepared in good faith to give a fair overall viewing of the property.
2. We have not undertaken a structural survey, nor tested that the services, appliances, equipment or facilities are in good working order.
3. Fowlers cannot verify that any necessary consents have been obtained for conversions, extensions and other alterations such as underpinning,

garaging and conservatories etc. Any reference to such alterations is not intended as a statement that any necessary planning or building consents have been obtained and if such details are fundamental to a purchase, then prospective buyers should contact this office for further information or make further enquiries on their own behalf.

4. Any area, boundary, distances or measurements referred to are given as a guide only and should not be relied upon. If such details are fundamental to a purchase, please contact this office for further information.

5. The photographs shown in these details show only certain aspects of the property at the time they were taken. Certain aspects therefore may have changed and it should not be assumed that the property remains precisely as displayed in the photographs.
6. Fowlers cannot verify whether the property and its grounds are subject to any restrictive covenants, rights of way, easements etc, and purchasers are advised to make further enquiries to satisfy themselves on these points.